

SMH Rehabilitation Unit Outcome Data: January - December 2007

We would like to share information on our most recent outcomes:

- * ***Patient satisfaction with the services provided***
- * ***Number of patients who received treatment according to diagnosis***
- * ***Average length of stay on the Rehab Unit according to diagnosis***
- * ***Percent of patients discharged home (vs. nursing home)***
- * ***Percent of improvement in functional skills such as self care, ambulation, social cognition***

Realize that every patient is different, and individual results vary depending on the severity of the problem, their other medical diagnosis and their level of independence before admission to the hospital.

Patient Satisfaction Scores

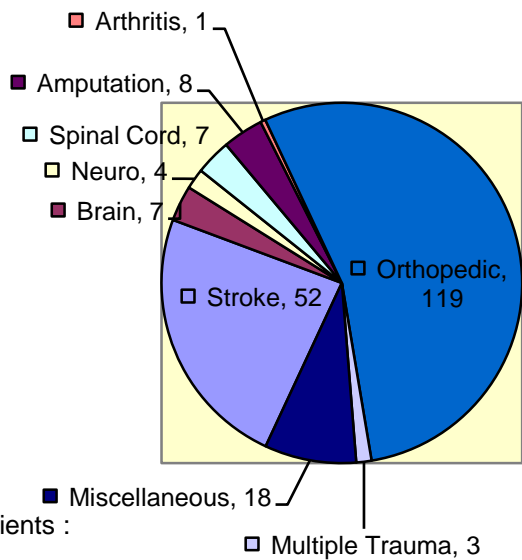
98th %ile--Overall Patient Satisfaction with the SMH Rehabilitation Unit

85.1% of the questions were responded to with "Very Good"--
the highest possible answer

95.6% of those responding stated they would recommend the SMH
Rehabilitation Unit to others

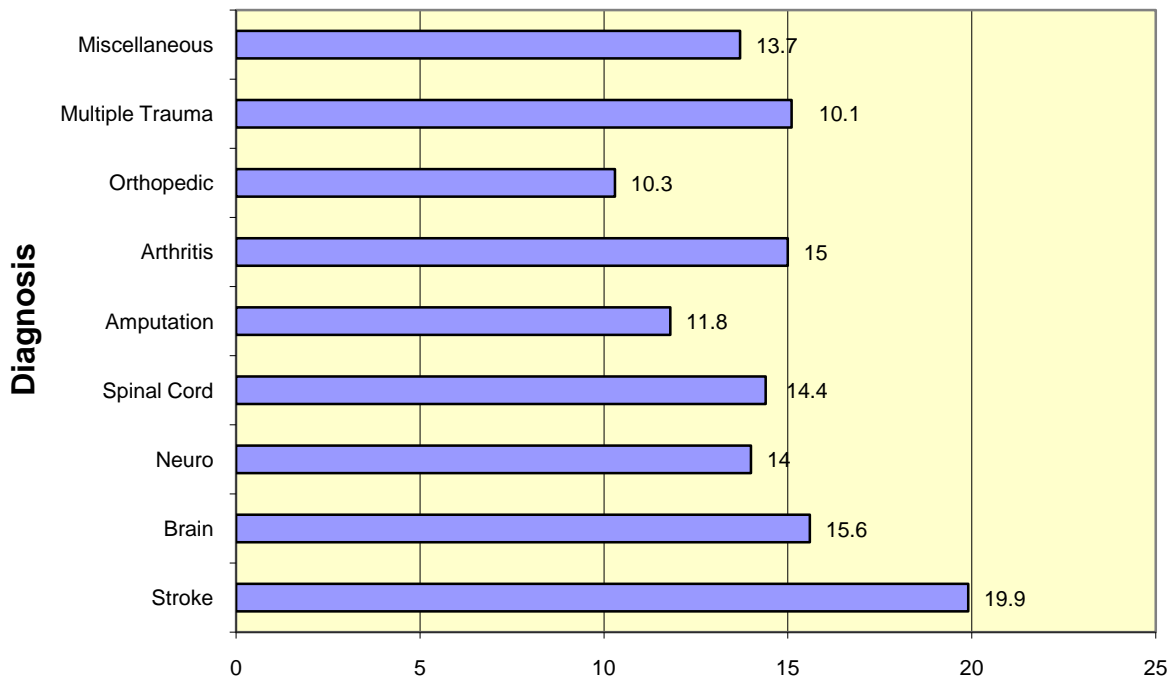
Patient Satisfaction Scores are from surveys conducted by Press-Ganey Associates.

Patients Served 2007



Total Number of Patients :
219

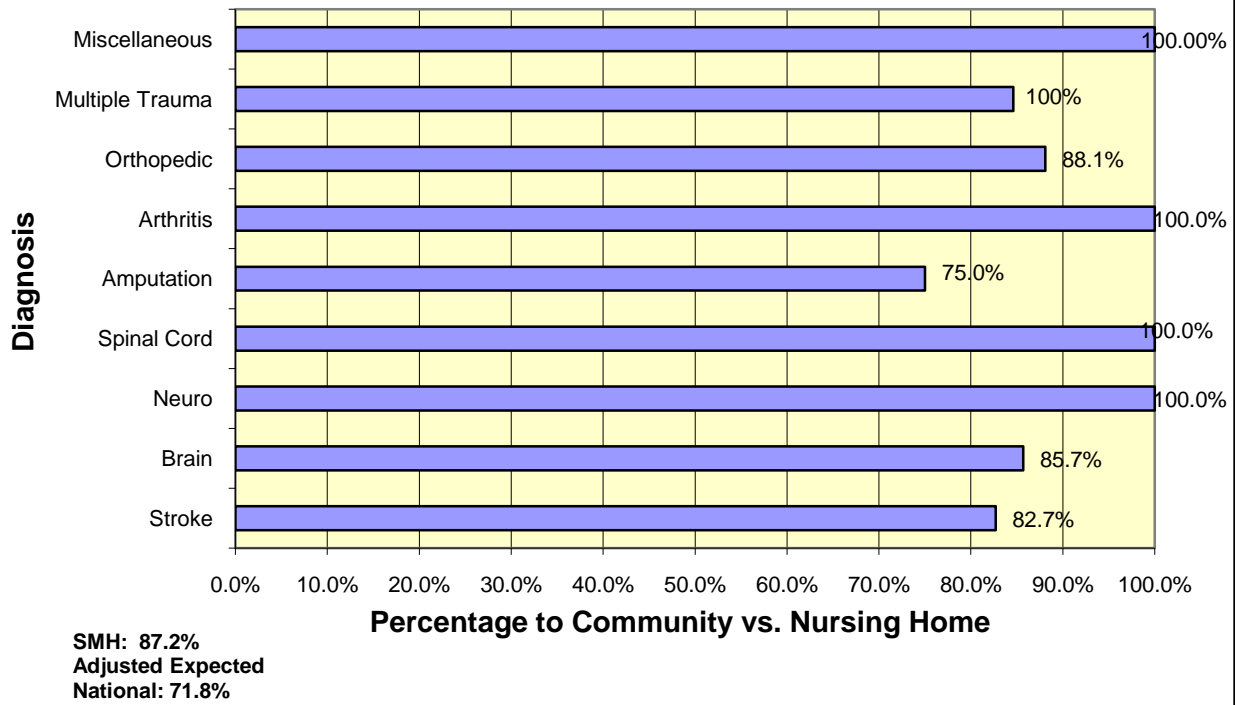
Average Length of Stay 2007



SMH Average: 13.6 days
Adjusted Expected National
Average: 14.3 days

Number of Days

Discharged Home after Rehab Unit Stay 2007



Functional Independence Measurement Improvement

